



JF MCKENNA[®]
Smarter for **Poultry**

66 Cathedral Road, Armagh, BT61 8AE

+44 (0)28 3752 4800

info@jfmckenna.com

www.jfmckenna.com



VENTILATION, WEIGHING & DATA MANAGEMENT

FANCOM[®]
forward thinking

We are experts in the supply of equipment and services to the poultry industry in the UK & Ireland.

JF McKenna Ltd is one of the main distributors for poultry equipment in Ireland and the UK. We have over 25 years experience in supplying cutting edge products for broilers, layer and breeder houses. We work with a number of world-renowned suppliers to constantly research, test and develop the products we products to maintain high levels of bird welfare and very high customer satisfaction.

JF McKenna work with our customers from planning, through installation and commissioning to ensure the highest level of support and product training. Before, during and after the sale, you will receive the highest level of customer care and support to ensure you get the most from our poultry products.

This brochure gives an overview of our ventilation, bird weighing and software systems.

CONTENT

.....	
PROJECT IMAGES	3
.....	
VENTILATION CONCEPTS	4-5
.....	
CLIMATE CONTROL	6-7
.....	
VENTILATION EQUIPMENT	8-9
.....	
BIRD WEIGHING EQUIPMENT	10
.....	
SOFTWARE	11
.....	





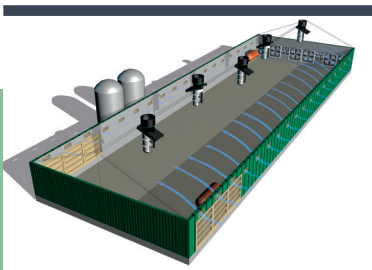
MTT

MTT has been tried and tested on various climate systems across the world. Depending on the required house concept, MTT has various versions of air inlet systems and exhaust fans for installation in the ridge or end gable.

There is a suitable MTT system for every house. Minimum Transition Tunnel ventilation (MTT) is an advanced ventilation system that ensures an even climate in every house. The MTT principle is based on a gradual transition from minimum to maximum ventilation. The result is a healthy climate for growth throughout the entire production process.

MTT MINIMUM PHASE

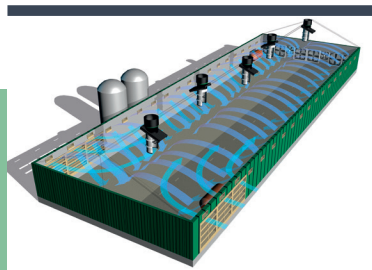
Accurate minimum ventilation is essential for the best performance from your birds.



In tropical climates too, where the focus is on preventing heat stress, minimum ventilation during cold nights is very important. Minimum ventilation is essential to extract damaging waste substances such as CO₂, NH₃, moisture and dust and to introduce oxygen rich air. The MTT system enables precise control of the airflow, which is distributed evenly throughout the house even at low air speeds.

MTT TRANSITIONAL PHASE

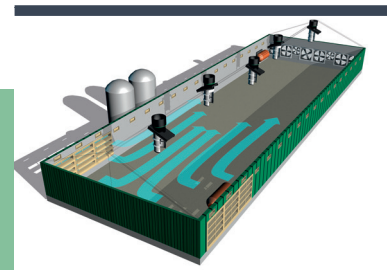
If the ventilation rises, MTT automatically switches to the transitional phase.



This gradual transition to tunnel ventilation allows the birds to slowly grow accustomed to the changing airflow pattern. This transition takes place almost imperceptibly, with no abrupt noises and without disrupting the light intensity. This prevents animal stress and ensures a calming atmosphere in the house. The birds do not migrate together as a group, but stay spread throughout the house.

MTT TUNNEL PHASE

With tunnel ventilation, the air flows over the birds at great speed and creates a cooling effect.



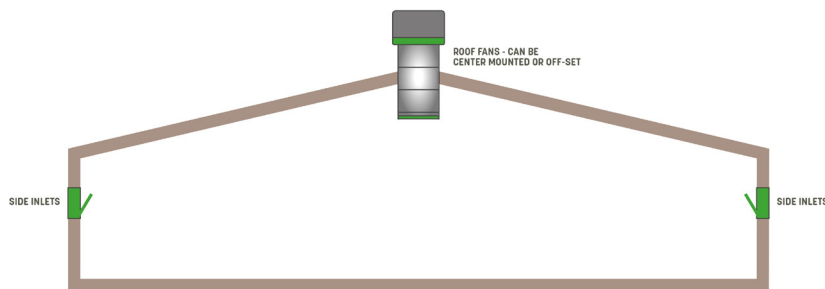
If required, pad cooling or misting can also be incorporated perfectly into the MTT system.



CONVENTIONAL VENTILATION

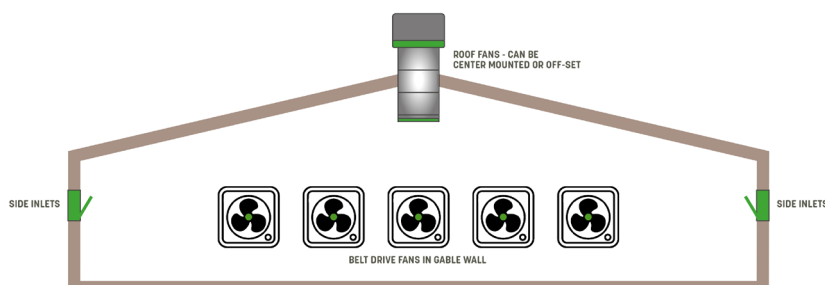
RIDGE ONLY

Fans are mounted in the roof chimneys along side wall inlets mounted along the two side walls of the house. The system has advantages for use in this application; since it is easy to fit, it presents near zero resistance to the fans when operating, expels the stale air vertically into the atmosphere thus eliminating dust falling on the roof sheeting, which could be washed down to the gutters and fouling the soil through the soak ways. Light baffles can be fitted below the unit to disperse the light.



COMBI VENTILATION

The system integrates both the conventional ridge ventilation principles and the use of belt drive fans mounted in the rear gable wall. The system ensures that the animals have optimum conditions by making the ventilation dependent on the outdoor temperature and the age of the birds. The fresh air is taken in via side wall inlets. The air is exhausted out through exhaust chimneys and gable fans during warm periods





COMPLETE CONTROL

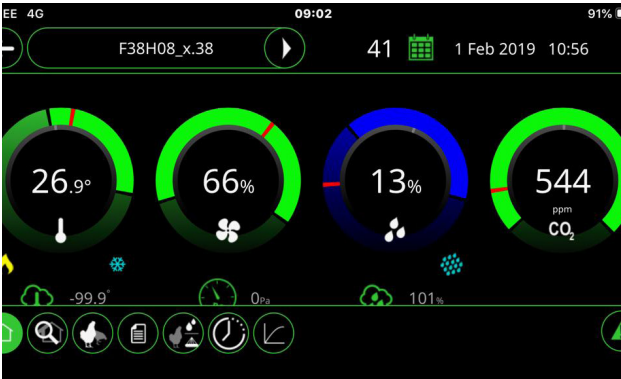
A properly controlled climate improves your animals performance & saves on energy costs for ventilation, heating & lighting. The specifically designed L37 & L38 Fancom climate computers create optimal conditions in your house at all times.

Available in both 6 & 12 inch screens, the Lumina series offers users complete control of their poultry or pig house using clear displays and easy to operate touch screens. The Luminas are housed inside a fully customised switchbox, and will control the climate in your poultry house via sensors, fans & side inlets. Multiple time clocks and registration possibilities are available, including controls for lighting, heating and feeding.



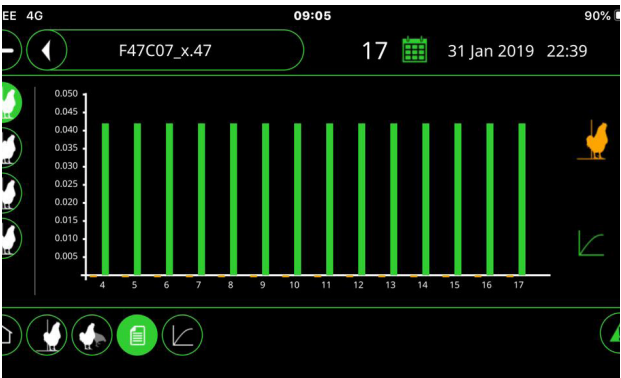
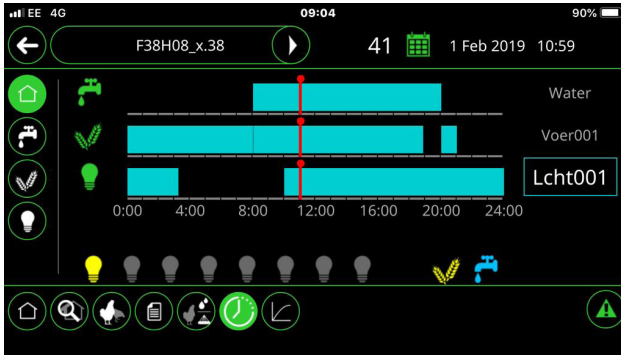
LUMINA TOUCH CONTROL

Available in both 6 & 12 inch screens, the Lumina series offers users complete control of their poultry house using clear displays and easy to operate touch screens. The Luminas are housed inside a fully customised switchbox, and will control the climate in your poultry house via sensors, fans & side inlets. Multiple time clocks and registration possibilities are available, including controls for lighting, heating and feeding.



Description	Offset	Setpoint
Relative humidity	0%	50%
Animal weight	0.000kg	0.000kg
Extra temp	0.0°	0.0°
Minimum ventilation	%	%
Maximum ventilation	0%	100%

Table for F38H08_x.38 at 09:04. The top bar shows 'F38H08_x.38', a play button, '41', a calendar icon, and '1 Feb 2019 10:59'.



INLETS, CHIMNEYS & FANS

Perfect poultry house ventilation is obtained through specially designed air inlets and exhaust fans.

FANTURA INLET

The Fancom Fantura Air Inlet ensures a constant, even supply of fresh air into the poultry house. It puts an end to cold air dropping down onto the birds and the litter stays nice and dry, reducing potential foot problems and improving uniformity. The Fantura air inlet system consists of an air inlet valve, an intelligent actuator and a smart control computer.



EXHAUST CHIMNEYS

Fancom Chimneys are available in diameters of 35cm to 80cm, and can be mounted centrally on the ridge, or off-set. A specially designed roof plate ensures the chimney fits perfectly onto the roof.



FANS

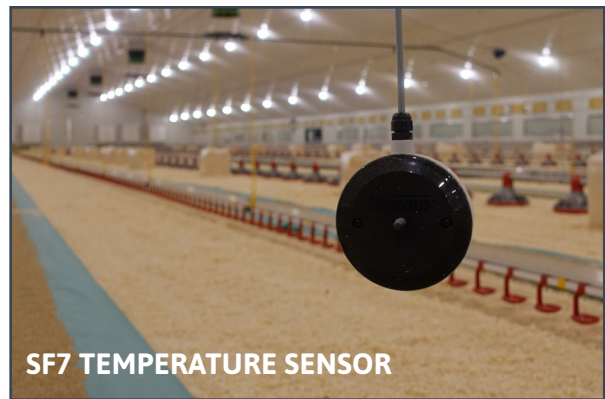
Fancom fans are specially developed for use in livestock buildings. They have an aluminium motor housing, synthetic or coated steel housing and synthetic fan blades. The fans combine high air flow capacity with low energy consumption and noise levels. Fancom have fans can be mounted inside exhaust chimneys



SENSORS & ALARMS

Fancom have a range of Sensors and Alarms which allow critical elements of the house to be monitored 24/7. Internal sensors and alarms include:

- Temperature Sensors
- Humidity sensors
- CO2 Sensor
- Ammonia Sensor
- Light Sensor
- Water Flow Meter
- Flashlight
- Siren
- FB Alarms



WEATHER STATION

The Fancom weather station measures wind velocity and direction, Outdoor sensors for temperature and humidity are also included. It is extra corrosion resistant, making it suitable for all climates.



NEW!



The Octalarm is a reliable, secure & user friendly alarm dialler for monitoring critical technical processes. Users can choose who should be alerted for each type of alarm. As soon as a process interruption is detected, OctalarmTouch will start alarm calls to the correct person. This enables corrective action to be taken in time, preventing damage and production loss. The Adesys Octalarm can be housed in the Fancom Switchbox.



BIRD WEIGHING



Continuously weighing animals provides you with an up to date overview of the growth process in your house and insight into animal activity. Fancom have developed a stainless steel weighing platform for bird weighing. The load cell, which is connected to a weighing computer, is hard wired and mounted to the ceiling rafter or other fixing surface. The hanger suspends from load cell framework.

LUMINA 47

The Lumina 47 is a touch screen weighing system for broilers or turkeys. The system consists of a handy control computer with one or two weighing scales and weighs all the animals in one house.



747

The 747 computer is designed for convenience, with a clear display showing all necessary options. The computer will accept up to 8 scales meaning 1 computer can weigh multiple houses on a site.





FARMMANAGER SOFTWARE & REMOTE APP

The FarmManager software has been specifically designed to complement the Fancom range of controllers, while at the same time aid the user with relevant and detailed data from the poultry houses. Comparison graphs can be drawn and studied to isolate information leading to a better growing environment and ultimately, better crop results. The Fancom remote app keeps you in touch with the Lumina control computers on your farm 24 hours a day, no matter where you are.





JF MCKENNA[®]
Smarter for **Poultry**

66 Cathedral Road, Armagh, BT61 8AE
+44 (0)28 3752 4800
info@jfmckenna.com
www.jfmckenna.com